



NORSHORE

Bringing the future one step closer

Multi-purpose Drilling and Well Intervention vessel **NORSHORE ATLANTIC**



NORSHORE has developed an efficient and environmental friendly multi purpose drilling and well intervention vessel. The vessel is specially designed for reducing well cost for our clients



Technical Specifications

Norshore Atlantic

Norshore Atlantic is primarily designed to reduce total well cost for our clients. The vessel can operate in shallow- and mid to deep-water segment drilling complete wells and performing complete subsea field decommissioning (P&A). The vessel is also fully equipped for performing pre-drilling of top-hole sections in deep water, well intervention operations with workover riser and subsea construction work.

GENERAL

Flag	Norwegian (NIS) Mobile Offshore Unit
Class	DNV 1A1, Ship shaped Drilling Unit, SF, E0, HELDK-SH, DYNPOS AUTRO, DK+, HL (2.8), LFL*, COMF-V(3), CLEAN DESIGN
Call Sign	LGIIH3
IMO no.	9545675
Home Port	Bergen
Design	Marin Teknikk MT 6022 XL
Yard	Otto Marine / PT Batamec
Hull No.	H7063
Delivered	March 2014

MAIN DIMENSIONS

Length over all	115,4 m
LBP	107,9 m
Beam	28,0 m
Depth to MainDeck	9,00 m
Draught	7,11 m
Airdraught from Waterline	46,8 m
Dead Weight	~ 7200 t
Gross Tonnage	8842 t
Net Tonnage	2652 t
Design Speed	14,0 kts
Gross deck Area	1405m ²
Moonpool	7,2 m x 7,2 m

DYNAMIC POSITIONING

DP System	K-POS SDP 22 + K-POS SDP12
Reference Systems	Dual Simrad HiPAP 500 LWT MK 15/500 (taut wire) Fanbeam Mk 4.2 2000 Kongsberg RADIUS 1000D Kongsberg Seapath 200 3 x DGPS systems

ACCOMODATION

Berths (cabins)	98 persons (32 x 1 man + 33 x 2 men)
Operation rooms	2 / total 80 m ²
Offices/conf. rooms	7 / total 153 m ²
Dayrooms / Lounges	5 / total 121 m ²
Messroom	1 / total 98 m ² - 58 seats
TV/Film room	1 / 32 seats
Hospital	1 / total 16 m ²

MACHINERY

Main Engines	4 x MAK 9M25 2 x MAK 6M25 (720 rpm)
Main Generators	4 x AvK DSG 125 2 x AvK DSG 114 Total 14.400 kW
Emergency Generator	1 x Caterpillar, 500 kW
Propulsion	2 x RollsRoyce AZP 120 – 3000 kW each
Tunnel Thruster	2 x RollsRoyce TT 2400 – 1500 kW fwd 1 x RollsRoyce TT 1800 – 660 kW aft
Azimuth Thruster	1 x RollsRoyce UL2001 – 1500 kW

AUTOMATION AND PMS

Type	K-Safe Kongsberg Maritime
------	---------------------------

TANK CAPACITIES

Fuel	1355 m ³
Pot Water	202 m ³
Drill Water	598 m ³
Ballast Water	4360 m ³
Liquid Mud	1150 m ³
Anti heeling	500 m ³
Hydrocarbon slop	85 m ³
Methanol	10 m ³
Dry Bulk	2 x 70 m ³ , 2 x 77 m ³ + optional bulk capacity on deck.

COMMUNICATION

Area	GMDSS A3 / World Wide
Sattelite System	KU / C-band (Phone and Data)
Telephone	All cabins and offices connected to Sattelite phone system
GSM	GSM at sea roaming service. Enable use of private mobile phones in the accomodation

ROV SYSTEM (FOR RENTAL TO CLIENT)

WROW	1 x Oceaneering Work ROV (Magnum) installed onboard.
------	--

LIFESAVING EQUIPMENT

Life Boats	2 x 45 + 2 x 63 Umoe Schat Harding
FRC MOB Boat	1 x Norsafe Magnum
Life rafts	2 x 101 pers Viking MES

FIRE AND GAS SYSTEM

Fire Pumps	2 x 205 m ³ /h—11,7bar
ESD system	K-Safe 700
Fire & Gas monitoring	Dräger
PA / GA system	Zenitel
Fixed system	Marioff HiFog system in accomodation and machinery spaces

OFFSHORE CRANE

Type	NOV AHC Knuckle Boom Crane
Main winch	140 t / 12 m (2500 m wire)
Aux. winch	20 t / 32 meter

HELIDECK

Type	Marine Aluminium
Dimension	D-value 22 m (S-92)

CEMENT UNIT (FOR RENTAL TO CLIENT)

Type	HCS 25E Advantage Skid
Supplier	Halliburton

ROTARY TABLE

Size	49 1/2" splittable false rotary table
------	---------------------------------------

DERRICK DERRICK

Type	NOV
Hook load	450 mt 4-falls - 300 mt 2-falls (Optional 585 mt)
Lifting height	27 m (34 m without Top Drive)
TOP DRIVE TOP DRIVE	
Type	NOV HPS-04 500t
SWL	450mT (Optional 585 mT)
Max rpm	180 rpm
Max torque	55 000 ft-lbs / 95 rpm
Max Mud pressure	345 bar

PIPE HANDLING CRANE

Type	Odin ABAS CRC 150
SWL Crane	8,0t
SWL Grippers	3,5t

CATWALK

Type	NOV-CWM P10-45-HB
------	-------------------

Tubular length	18 m
----------------	------

Tubular Diameter	36"
------------------	-----

Max Load	15 t
----------	------

IRON ROUGHNECK

Type	NOV HydraTong ARN-200
Max Make up Torque	100 000 ft-lbs
Max break out Torque	145 000 ft-lbs
Tool Joint range	3 1/2" - 9 3/4"

MUD SYSTEM

Type	NOV
Mud Pumps	3 x 1600 HP 5000 psi
Mud Mixing Skid	2 x hopper, sack cutter, chemical mix pumps

RISER

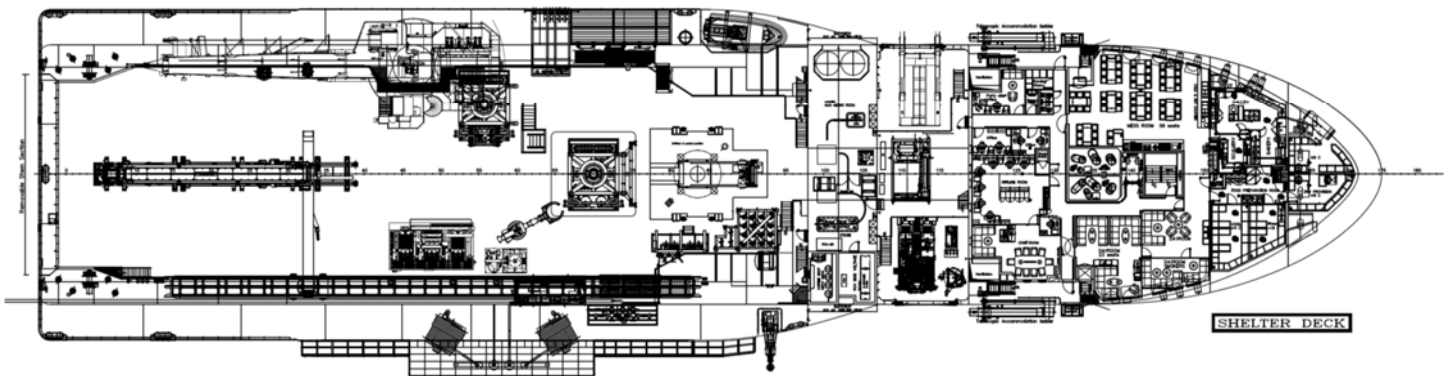
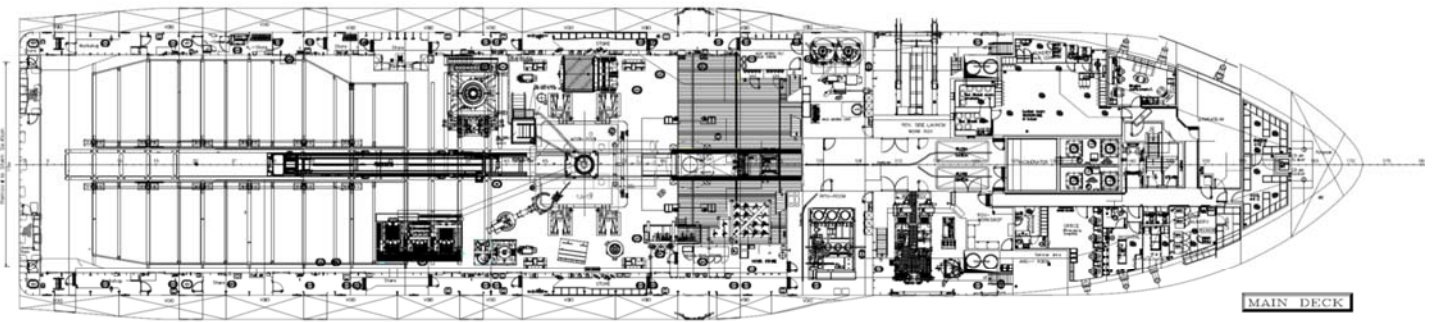
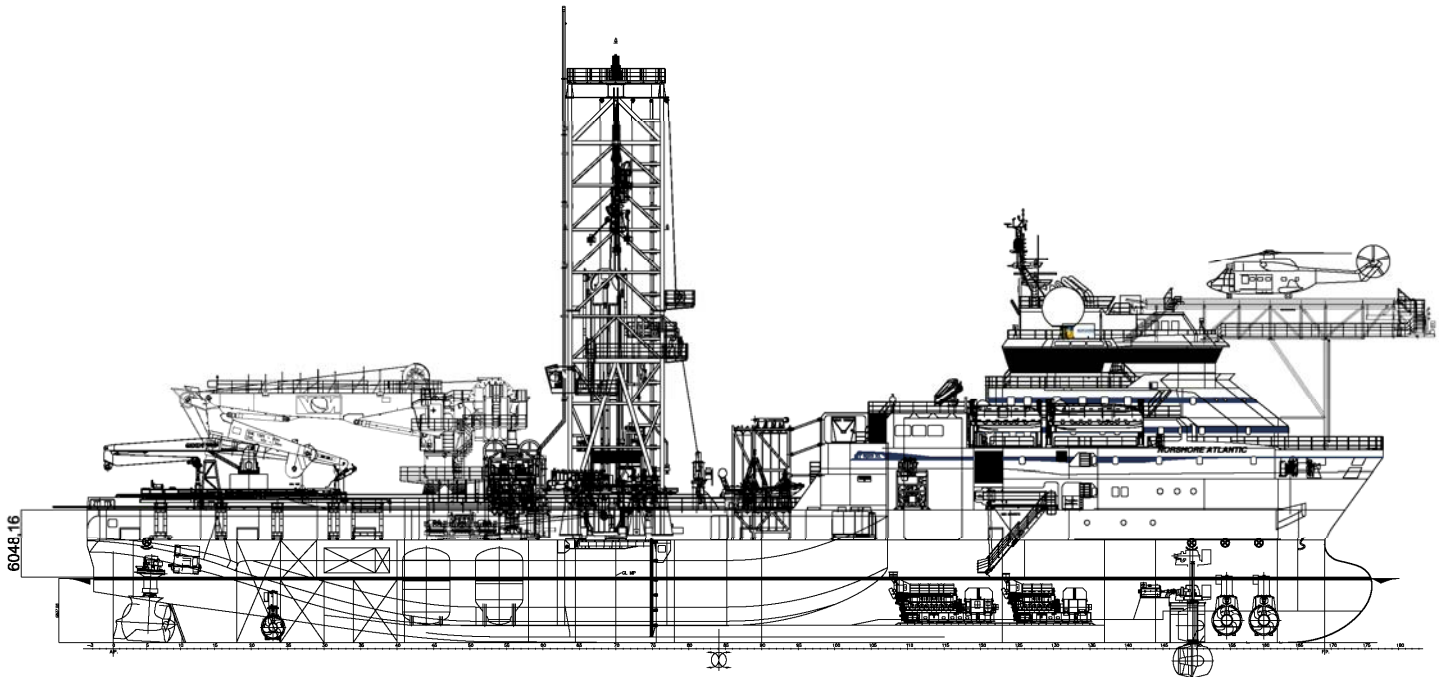
Type	Norshore Design
ID	20 inch.

BOP

Type	Cameron 18 3/4" 10K, Pilot Hydraulic
Configuration	2 x pipe ram 2 x Shear Ram 1 x annular (5K) H4 Well head connector
Water depth	Max. 750 meters

MUD TREATMENT SYSTEM

Type	GN Solids Control
Shakers	2 x GNZS594-HB
Mudcleaner	1 x GNZJ594-3S16N
Vacuum Degasser	1 x GNZCQ360
Mud Gas Separator	1 x GNZYYP1000A
Centrifugal Pump	1 x GNSB8x6-14)
Screw Conveyor	GNSC 12-24





NORSHORE was established in 2007 and is an independent Norwegian Offshore company based in Bergen, Norway. Norshore has developed a drilling concept using field proven drilling technology on specially designed Drilling Vessels.

Our business philosophy is to focus on clients' needs, innovative solutions and the expertise of our employees. Operational safety, environmental preservation, quality and efficiency are the basis in all our activities.

Norshore is a fully integrated drilling and well intervention company with highly qualified personnel for all stages of operation.

Norshore shall deliver high quality cost effective drilling and well services in accordance with customer demands.

Bringing the future one step closer....

NORSHORE

Straume Teknologisenter
Trollhaugmyra 15
N-5353 Straume, Norway

Tel: (+47) 55 09 35 00
Fax: (+47) 55 09 35 01
E-mail: mail@norshore.no

Trond Haugland

VP Operations

Tel: +47 994 54 561

E-mail: th@norshore.no